

WHEN IS IT AN EMERGENCY?

The following is a list* of common indications that your pet may be in serious distress and in need of emergency care:

Difficulty breathing

Major trauma including falls, hit-by-car, large wounds, broken bones

Penetrating wounds, especially in the chest or abdomen

Exposure to toxin or medication that was not prescribed

Staggering, stumbling, head-tilt behavior

Sudden blindness

Non-weight bearing on any limb

Ingestion of a foreign material

Inflammation, swelling or other irritation to the eyes

Allergic reactions, such as severe hives, severe itching, facial swelling

Uncontrolled bleeding from any part of the body

Bloated, distended or painful abdomen

Inability to urinate or defecate

Loss of balance or consciousness

Severe vomiting and/or diarrhea, with or without blood

Paralysis

***This list does not cover every indication of an emergency situation.**

WE RECOMMEND THAT OUR EMERGENCY CLIENTS FOLLOW UP WITH THEIR REFERRING VETERINARIAN.

AMBULANCE SERVICES

Inter-hospital ambulance transport is available when needed for the safety of your pet!

We have the ability to provide oxygen therapy as well as the monitoring of vital signs during transport.



Directions



FROM THE WEST:

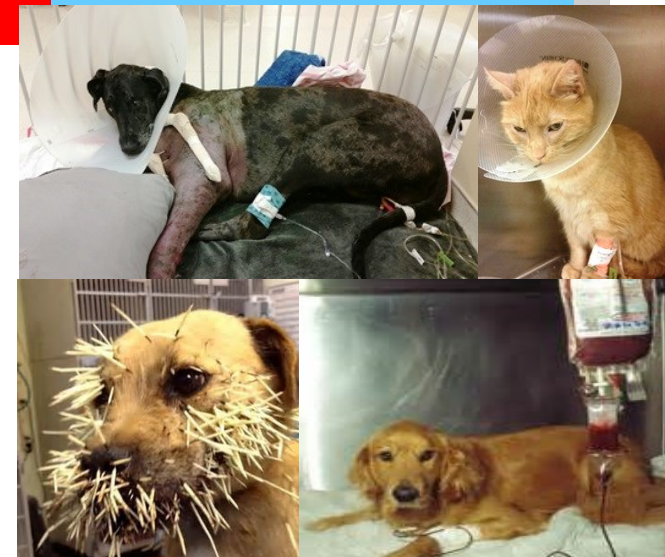
Take Route 2 East to exit 25, then take Route 2A East for 1.8 miles. Take a left at the General Store onto Batherick Road. Go up the hill and stay to the right into the business park. You will find Wachusett Animal Hospital and Pet Retreat on the right.

FROM THE EAST:

Take Route 2 West to exit 27, then take a right at the end of the ramp onto Depot Road. Continue on Depot Road until you come to a stop sign. go straight through the stop sign onto Batherick Road. go up the hill and stay to the right into the business park. You will find Wachusett Animal Hospital and Pet Retreat on the right.

EMERGENCY SERVICES

Proudly Offering The Area's Only 24 Hour Emergency and Critical Care Facility



29 Theodore Drive Westminster, MA 01473
Emergency Line: 978-407-1122
Main Line: 978-874-4100
www.wahpr.com

WHAT TO EXPECT

Wachusett Animal Hospital and Pet Retreat offers 24 hour emergency care 7 days a week, including all weekends and holidays. Veterinarians and Technicians are onsite at all times to answer your questions and see to the medical needs of your pet.

We recommend calling ahead in the event of an emergency
978-407-1122

Upon arrival, all pets will be immediately triaged to determine the priority of the patient's treatments based on the severity of their condition

Pets with critical conditions will be stabilized with an IV catheter, fluids and oxygen if necessary

After initial assessment of your pet, a treatment plan will be created and discussed, for which a down payment will be required.

If your pet is hospitalized, Veterinarians and hospital staff are readily available for frequent updates.



WHAT WE OFFER

DIAGNOSTICS

We offer digital radiography, endoscopy and ultrasound. Consultations with a radiologist are available 24 hours a day

In-house laboratory for blood chemistries, complete blood counts, electrolytes, coagulation, blood gases, thyroid testing, bile acids, and cortisol.

Tonometry ability to check ocular pressure to screen for glaucoma

INTENSIVE CARE



Oxygen therapy for patients with respiratory difficulty

Blood and plasma transfusion capability, including blood typing and cross matching

True isolation ward with a separate entrance and ventilation system for patients with potentially infectious diseases

Continual patient monitoring

Monitoring equipment: blood pressure, pulse oximetry, electrocardiogram, capnography, telemetry for continuous cardiac monitoring

Accessible and knowledgeable staff whom work alongside the Veterinarians for treatments and constant updates



WE ACCEPT ALL MAJOR CREDIT AND DEBIT CARDS, CARE CREDIT AND CASH. WE DO NOT OFFER PAYMENT PLANS.

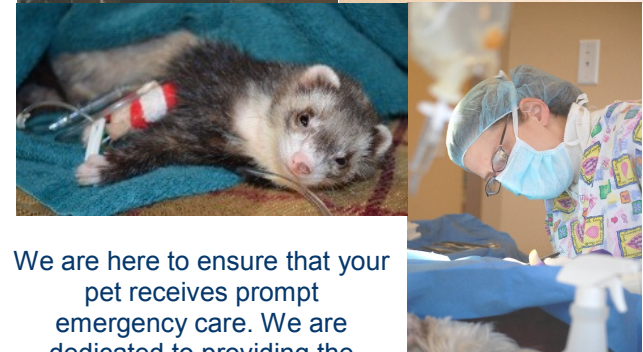
SORRY NO CHECKS.

EMERGENCY SURGERY

Two surgical suites for soft tissue, orthopedic and emergency procedures

Individualized anesthetic and pain management protocols tailored to the specific needs of each pet

Continuous monitoring throughout the procedure by a designated doctor and technician



We are here to ensure that your pet receives prompt emergency care. We are dedicated to providing the highest level of Veterinary care in our 19,000 sq. ft. state-of-the-art Veterinary Hospital.



WAHPR is fully backed by a natural gas generator. No matter what the weather, no matter how long the power is out; WAHPR is always fully operational and ready to help your sick or injured furry family members.